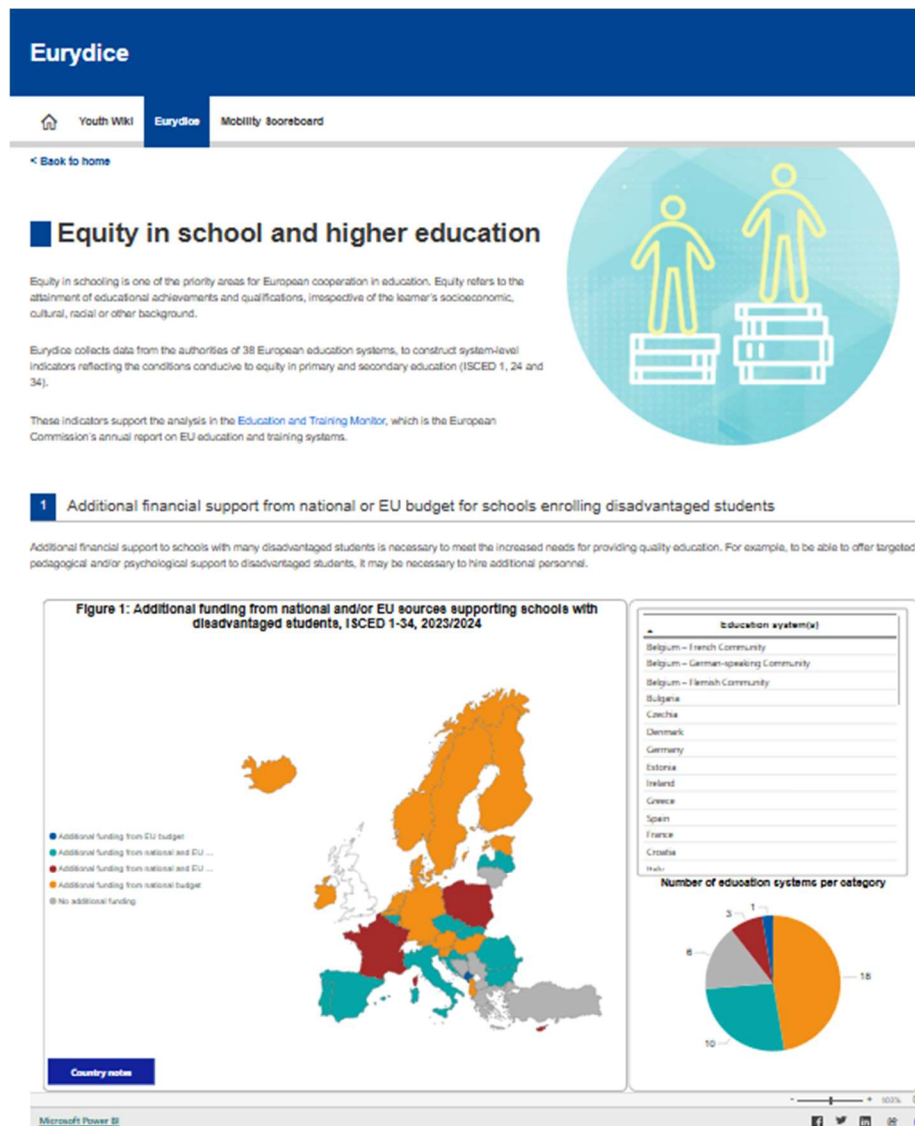


Interaktivní publikace je vám k dispozici na adrese:

<https://eurydice.eacea.ec.europa.eu/data-and-visuals/equity>



The indicator shows which countries provide financial support, in addition to the usual funding, to schools with disadvantaged students, such as students with immigrant background or from poorer families. It also shows whether the additional funding comes from national or EU sources.

According to the latest Eurydice data, most educational systems make additional funding available to schools with disadvantaged students. Specifically, 32 provide extra financial support whereas 6 do not. In most cases, the extra funding comes from the national budget. That is, 32 education systems source the money from the national budget while 14 from the EU budget. Thirteen education systems draw from both sources.