

Interaktivní publikace je vám k dispozici na adrese:

<https://eurydice.eacea.ec.europa.eu/data-and-visuals/european-school-calendars>



[< Back to home](#)

School calendars in Europe

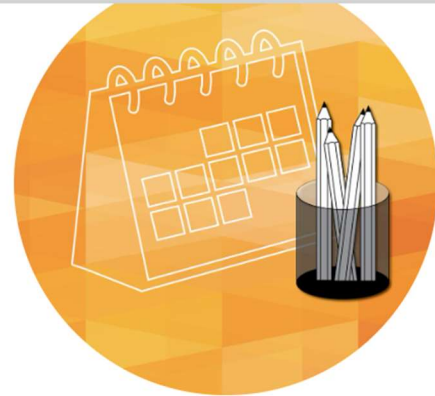
This tool gives an overview on the **start of the school year**, the timing and length of **school holidays**, as well as on the **decision-making level**. Its two main objectives are to provide a better understanding of students' school rhythms in Europe and to facilitate the organisation of transnational activities and exchanges at school level in Europe.

It covers the 37 European countries, members of the [Eurydice network](#).

Data cover **primary and general secondary education**, in accordance with the [International Standard Classification of Education \(ISCED 2011\)](#).

Information is presented under the **2 tabs** below:

- Calendar view
- Comparative information.



Open Data



Country-specific notes



Glossary and classification

For more information:

- Definitions and information on the classification of education levels (ISCED) are available in the [glossary](#).
- Notes explaining specificities of the data collected are available in the [country-specific notes](#).
- Data was collected with the contribution of the [Eurydice network member countries](#).

Calendar view

Comparative Information