

Interaktivní publikace je vám k dispozici na adrese:

<https://eurydice.eacea.ec.europa.eu/data-and-visuals/european-academic-year>

Eurydice



Youth Wiki

Eurydice

Mobility Scoreboard

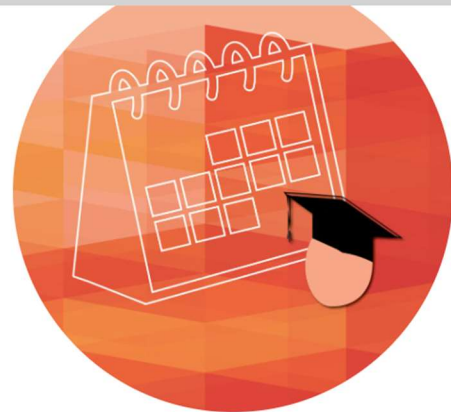
[< Back to home](#)

Organisation of the academic year in Europe

The academic calendar plays a crucial role in determining the feasibility and preferences for student and staff mobility. If the academic year started and finished at similar times, and if it were organised into the same or similar number of terms or semesters, planning mobility periods for students and staff would be easier. Otherwise, institutions with different academic schedules may need to negotiate specific agreements to facilitate mobility.

The 3 indicators below, developed by the [Eurydice network](#), cover tertiary education from short-cycle tertiary education to doctoral or equivalent level (from ISCED 5 to ISCED 8, according to the [International Standard Classification of Education \(ISCED\)](#)). Information covers both public and private sectors.

For more information on national specificities, and divergence to the common guidelines, please see the [country-specific notes](#).



Open data



Country-specific notes