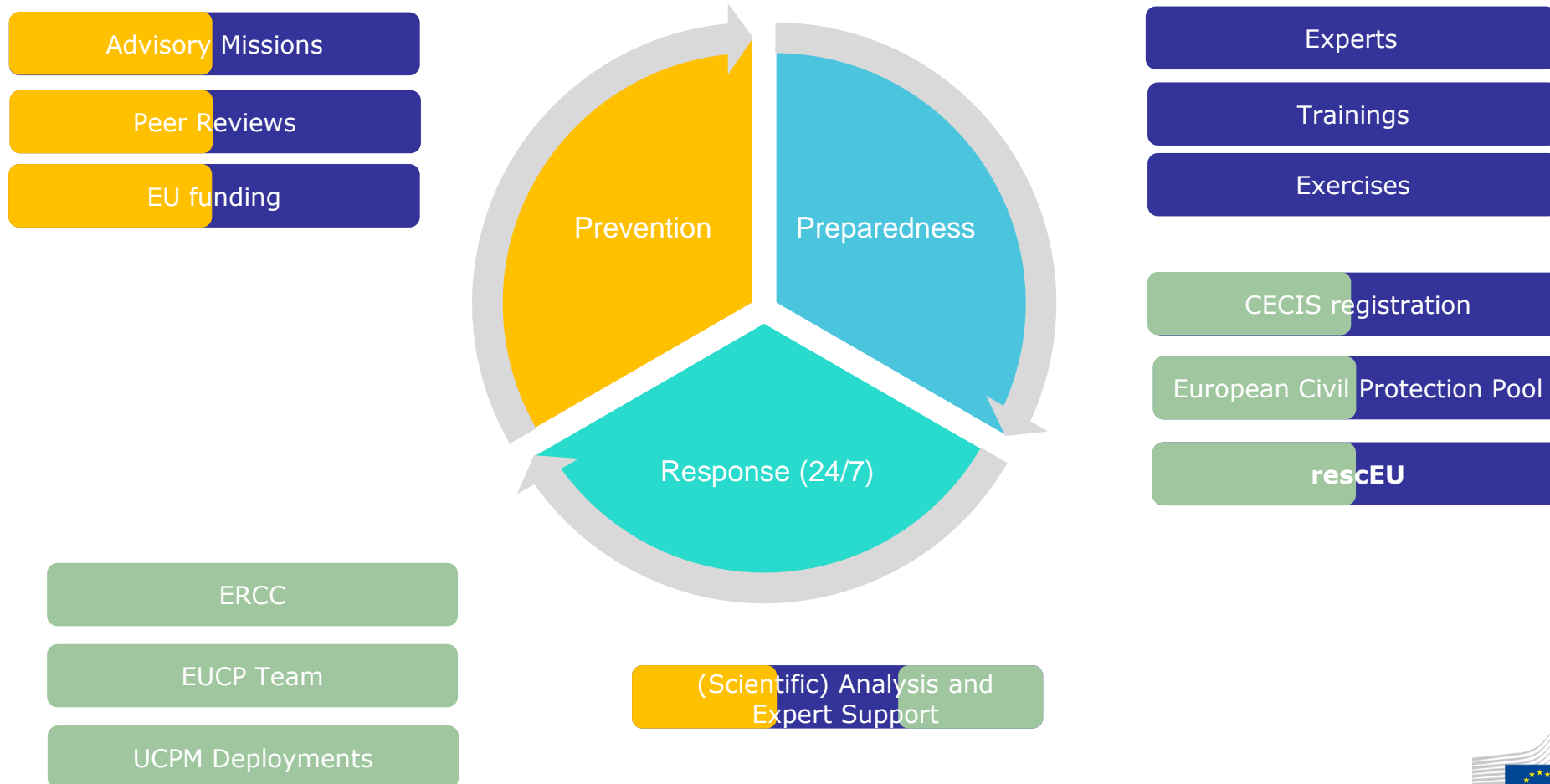




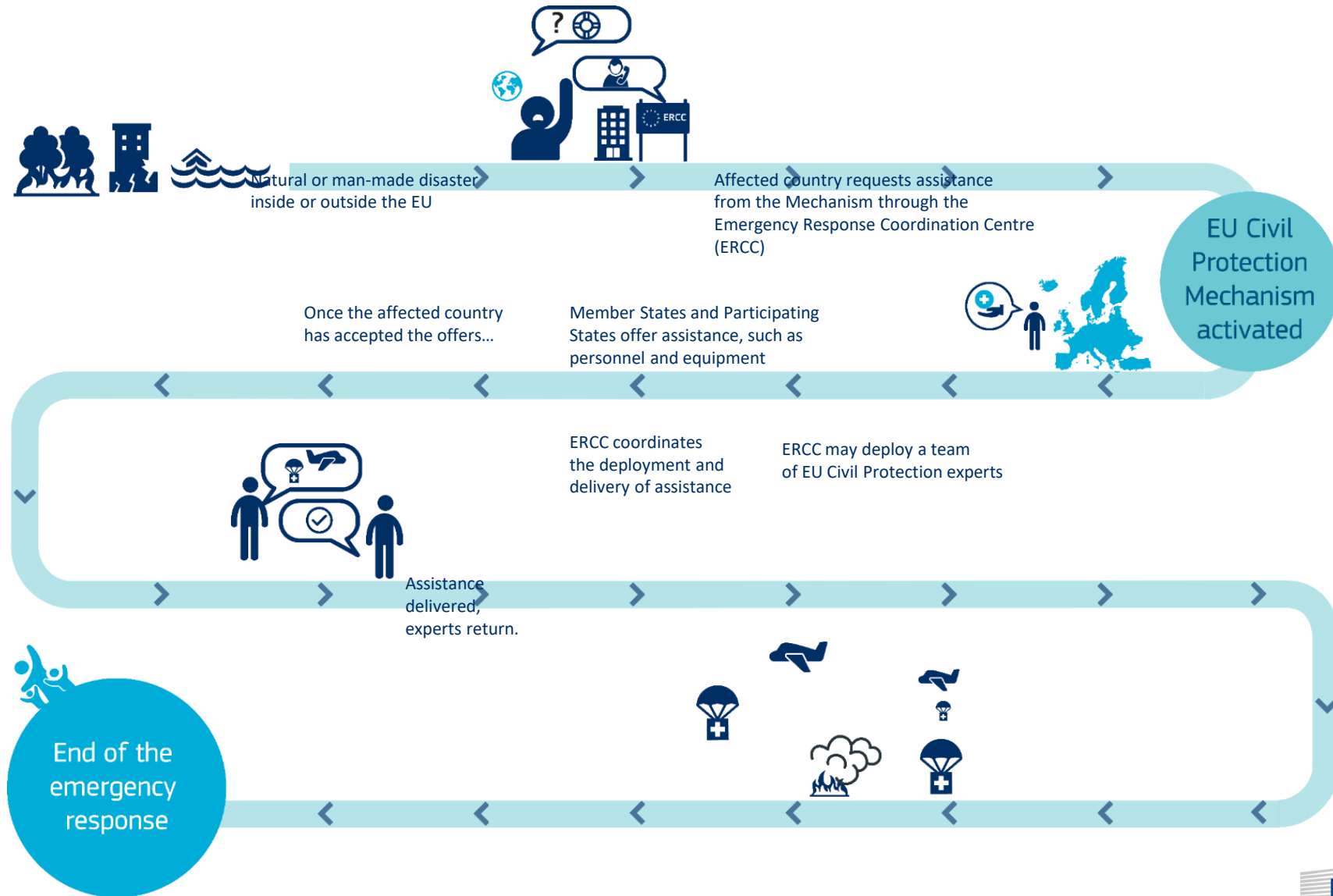
EU Civil Protection mechanism: rescEU

Raluca Murg
Policy Officer, Civil Protection- Horizontal issues
DG ECHO B.1

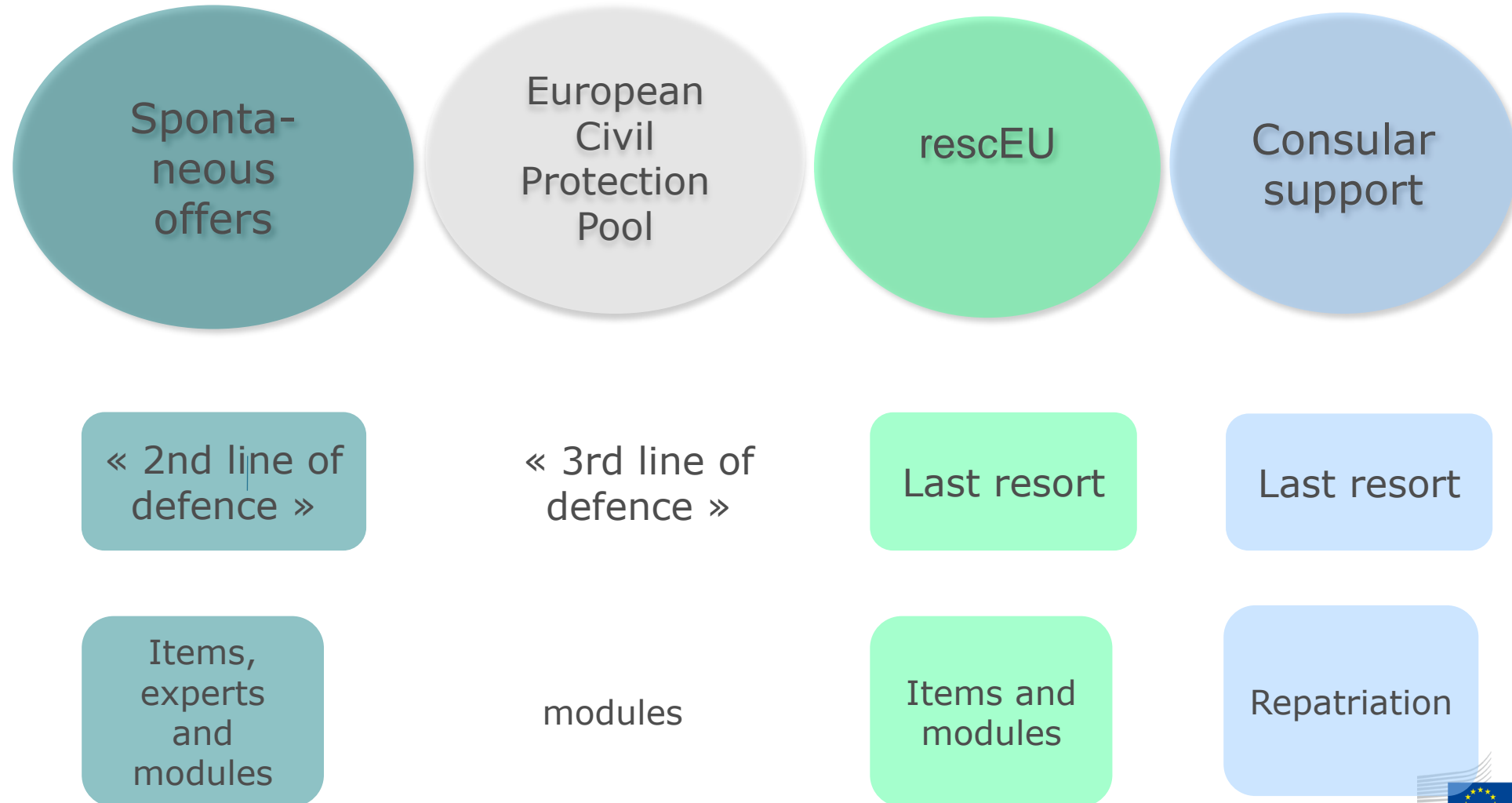
Union Civil Protection Mechanism



How does the EU Civil Protection Mechanism work?



Support through UCPM



COVID-19 Assistance by and for UCPM Member and Participating States



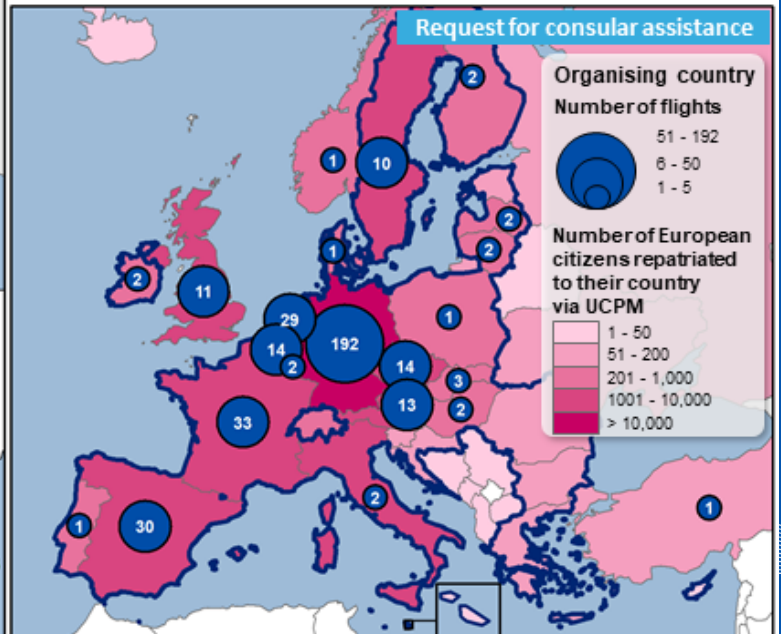
EU Civil Protection Mechanism (UCPM) Member/Participating States (MS/PS)

- COVID response**
- Assistance delivered
 - Assistance requested
 - Assistance delivered and requested
 - Other UCPM MS/PS
 - European Union border
 - Requested items have been fulfilled by market procurement
- UCPM activations**

Types of assistance delivered

- Medical masks
- Other medical equipment
- Hygiene items (non-medical masks, disinfectants, ...)
- Living/multi functional container
- Medical station
- Emergency Medical Team / medical personnel
- Non Food Items (e.g. generators)
- Shelter and relief items
- Assistance offered from the rescEU medical stockpile

- 14 activations in Europe for PPEs, equipment, medical staff and others: IT, ES, LT, HR, RS, ME, MK, EE, EL, CZ, FR, DK and NL² (2x)
- 27 requests for consular support from 19 Member States (AT, DE, IT, BE, LT, LV, CZ, PL, PT, LU, ES, FR, NL, IE, FI, DK, SE, HU, SK), 2 Participating States (NO, TR) + the UK
- 620,000 masks, 1,000,000* gloves, 50,000 gowns and 30 ventilators have been delivered from the rescEU medical stockpile (*estimated date for full delivery: 18/11)
- 82,064 EU citizens repatriated by 369 flights facilitated by the UCPM



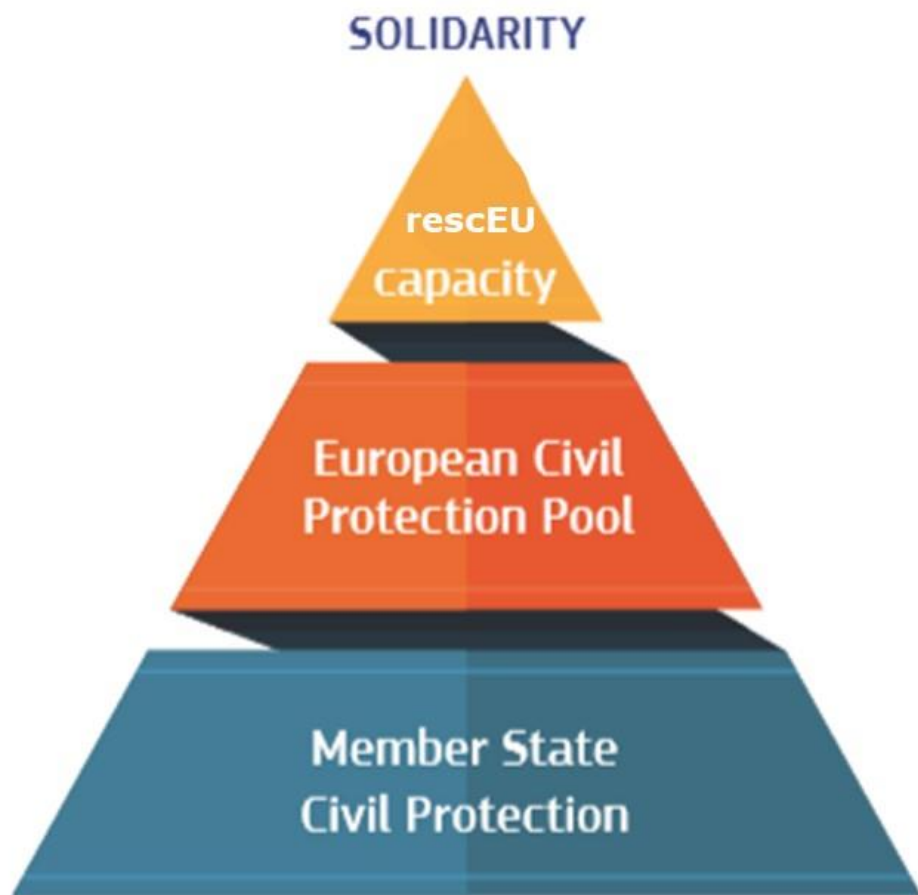
Copyright, European Union, 2020. Map created by DG ECHO/A.3. Situational Awareness Team. Sources: DG ECHO, European Commission, GISCO, OCHA. The boundaries and names shown on this map do not imply official endorsement or acceptance by the European Union.

rescEU: the trigger

- The 2017 Portugal wild fires (June & October) were a key event.
- The UCPM was overwhelmed, overstretched and could not sufficiently help Portugal.
- There was a clear capacity gap in capacities for battling forest fires.
- It left huge economic, environmental and social damage.



Initial rescEU architecture



Main strands of action:

- Stronger collective response to crisis (all costs and capacities of rescEU fully covered by the EC)
- EC will assist MS to boost own national capacities by financing adaptation, repair, transport and operation cost of existing resources (as part of the ECPP)
- Stepping up disaster prevention and preparedness to identify and address possible gaps

COVID-19 crisis... and the new Commission proposal to amend UCPM

- Proposal adopted on 2 June 2020
- Targeted amendment in response to the Covid-19 crisis.
- Adopted in EP Plenary on 26-29 April 2021 and entered into force in May 2021 (record time!)

This legislation will be decisive for a more resilient Europe, with more capacity to respond to disasters.

Janez Lenarčič, European Commissioner for Crisis Management



When – the process...and the record time for adoption!



Covid19 outbreak in Europe



The Commission **presents the new legislative proposal**



First political trilogue and opening of negotiations



Final approval by the co-legislators and entry into force



The EP and the European Council **call for a reinforced EU disaster management system**

The EP and European Council receive respective **mandates for negotiations**

Last technical trilogue and end of negotiations



The main features of the regulation – prevention and preparedness phase

Disaster Resilience Goals

- non-binding & via COM recommendations
- limited to the area of civil protection

Disaster Scenario Planning



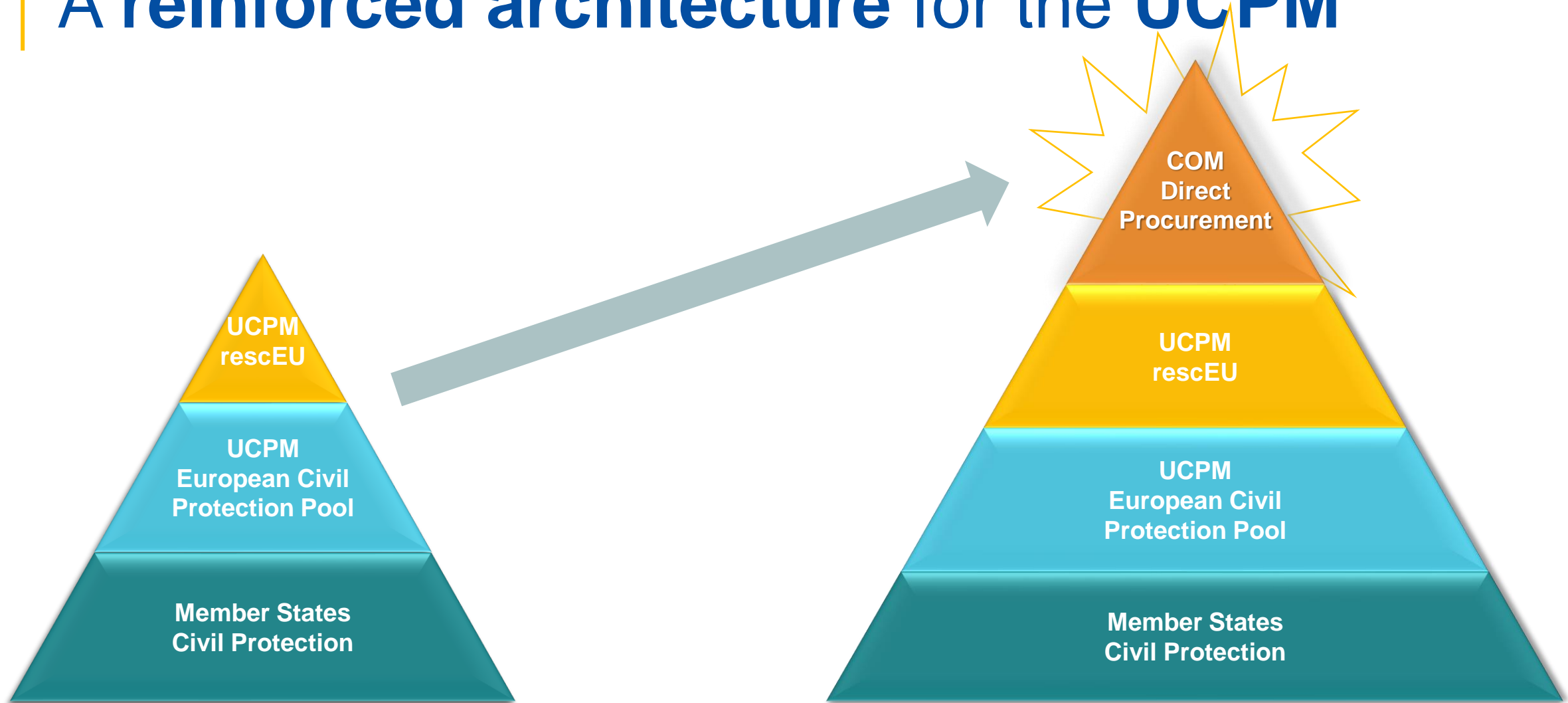
Disaster Loss Data



Build on linkages:



A reinforced architecture for the UCPM



The main features of the regulation - Direct procurement

Before

→ **only MS** can procure and host rescEU capacities



Now

also the Commission can (directly) procure rescEU capacities, under specific conditions

Transport and logistics capacities

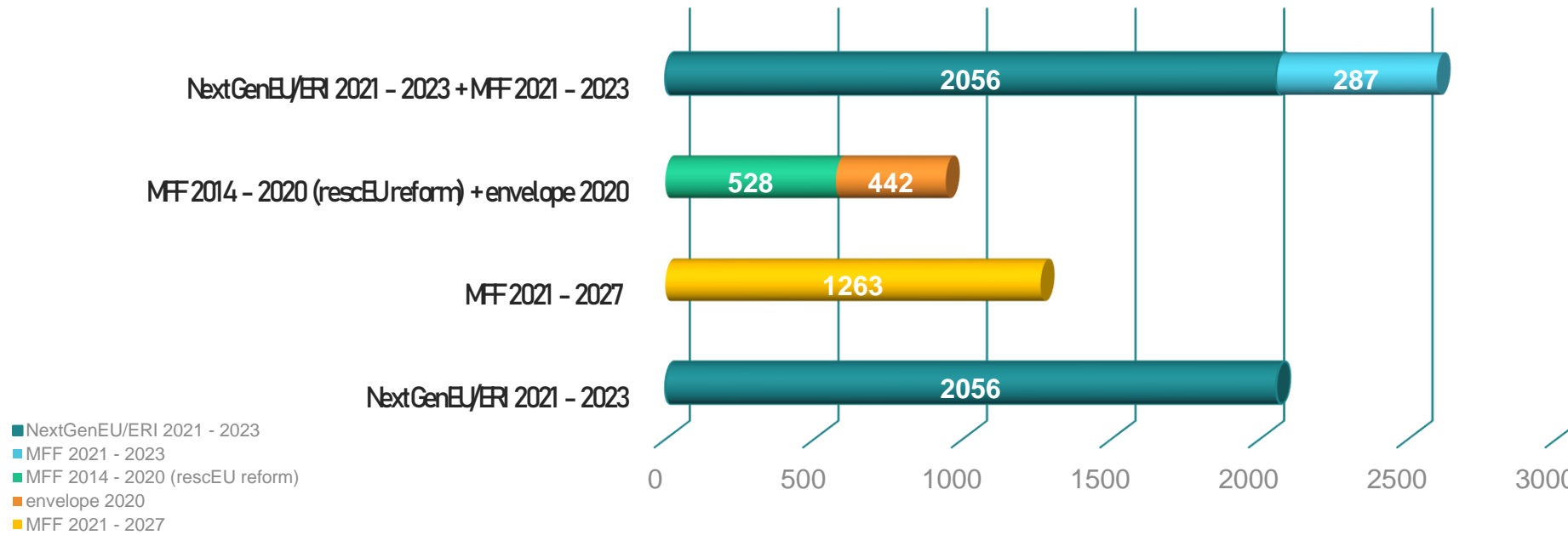
1. **always** possible (also in 'peace time')
2. **rent, lease or contract**, NO acquisition (and no ownership)
3. Implementing Act needed

(any other) rescEU capacity, existing or new

1. **only in** duly justified cases of **emergency**
2. **only items or assets**, NO modules!
3. Urgent Implementing Act needed
4. in force for 6 months, CPC to confirm or reject

Budget boost & flexibility

UCPM BUDGET (IN MILLIONS € - CURRENT PRICES)



*The top bar shows the UCPM budget in the next three years (2021/2023): NextGenEU/ERI + MFF annual allocation.

Increased flexibility in budget management

- More flexible allocation – Annex 1
- Indirect Management
- Multi-annuality in work programming
- 100 % financing of rescEU capacities
- Carry-over of commitments (limited to response under MFF funds)

Other provisions



Environmental disasters

Financial support
for the transport of
assistance



ERCC

**Strengthened
cooperation** with
national CP
authorities



Green recital

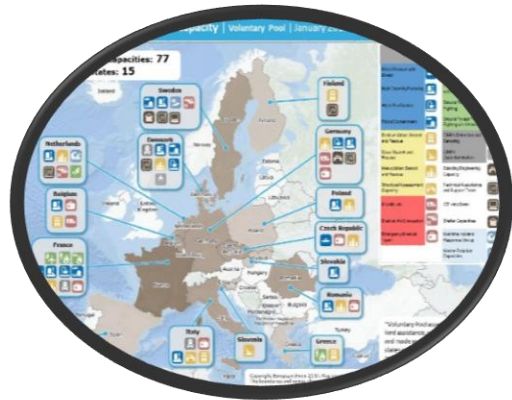
The **UCPM**
contributes to the EU
climate objectives



Facilitation of Experts

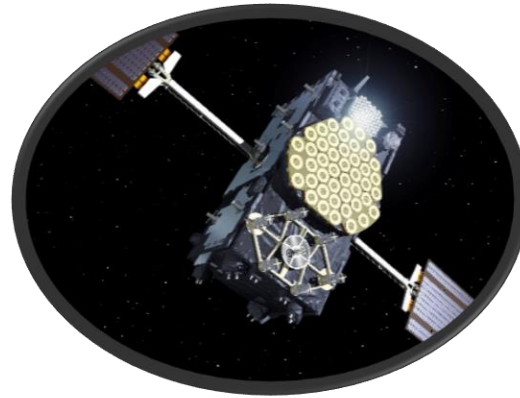
**More technical
expertise** where and
when needed

Other provisions



ECPP

Operational costs
when deployed
outside the EU



Galileo

Using emergency services provided by
EU infrastructure



Situational awareness

Further develop
analysis capability



Visibility

More visibility requirements for MS
receiving funding or
assistance



Thank you!

Raluca Murg

DG ECHO Policy Officer B1

raluca.murg@ec.europa.eu