

Pathways to school success



Commission proposal for a Council Recommendation



Anna-Maria Giannopoulou,
Deputy Head of Unit B.2 Schools and
Multilingualism, DG EAC,
European Commission

Photo by [Tim Mossholder](#) on [Unsplash](#)

Achieving the **EUROPEAN EDUCATION AREA** by 2025



1



Quality in education and training

- Boost basic and transversal skills
- More mobility and cooperation opportunities
- Support lifelong acquisition of language competences
- Develop a European perspective in education



2



Inclusion and gender equality

- Pathways to School Success
- 50 centres of excellence for VET
- European Approach to micro-credentials
- Gender-sensitive teaching



3



Green and digital transitions

- Education for Climate Coalition
- Greening of education infrastructure
- Council Recommendation on education for environmental sustainability
- Digital Education Action Plan



4



Teachers and trainers

- 25 Erasmus Teacher Academies
- European guidance for national career frameworks
- European Innovative Teaching Award



5



Higher education

- European Universities full roll-out
- Development of a European Degree
- Legal statute for alliances of universities
- Erasmus+ Mobile App



6



Geopolitical dimension

- Team Europe approach
- Strengthen cooperation with strategic global partners
- Expand international dimension of Erasmus+

Education is essential to the vitality of European Society and Economy. The European Education Area aims to bring to the education and training communities the support they need to fulfil their fundamental mission, in challenging and exciting times

Ursula von der Leyen
President of the European Commission



European
Commission

Assessment of the implementation of the 2011 Council Recommendation on policies to reduce early school leaving



- On average, the **rate of early school leaving decreased from 13.4% in 2011 to 10.2% in 2019** across Europe.

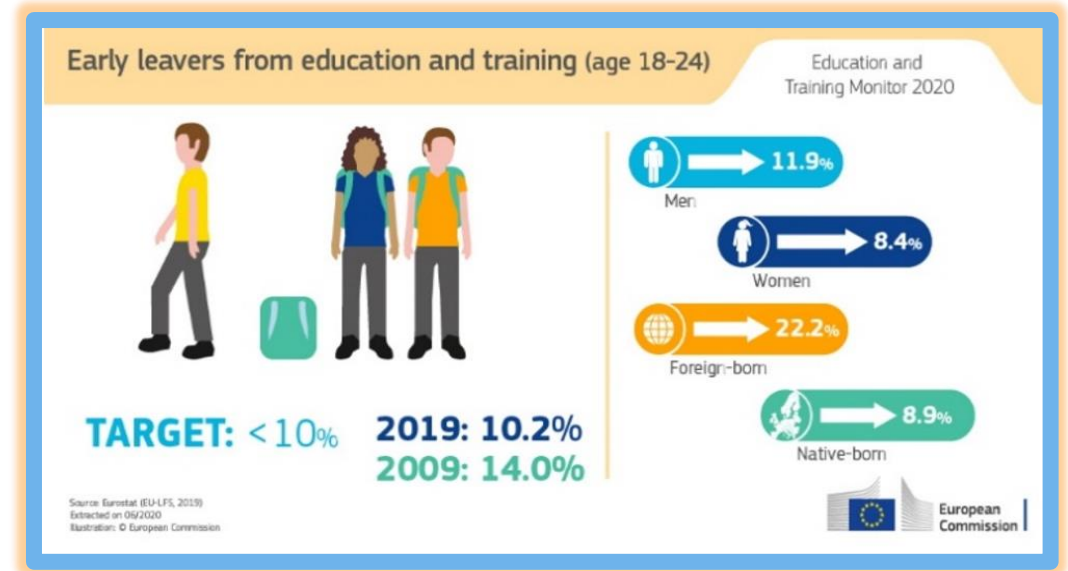
HOWEVER

- considerable differences still exist between countries and demographics with people of a **migrant background**, **young men** and those living in **rural areas** being more likely to end their education before compulsory school leaving age.

What are the challenges?



PISA 2018: one in five 15-year old Europeans lack adequate reading, maths or science competences.



10% early leavers from education and training
only 83% have completed upper secondary education.

More challenges. . .



Photo by [Timothy Eberly](#) on [Unsplash](#)

PISA 2018:
Pupils' sense of belonging at school is declining and bullying is widespread.



Photo by [Sharon McCutcheon](#) on [Unsplash](#)

The **COVID-19** has hit the most fragile students hardest. More learners at risk of dropping out. Mental health difficulties have risen.

Achieving a European Education Area by 2025



**Inclusion and
gender equality**

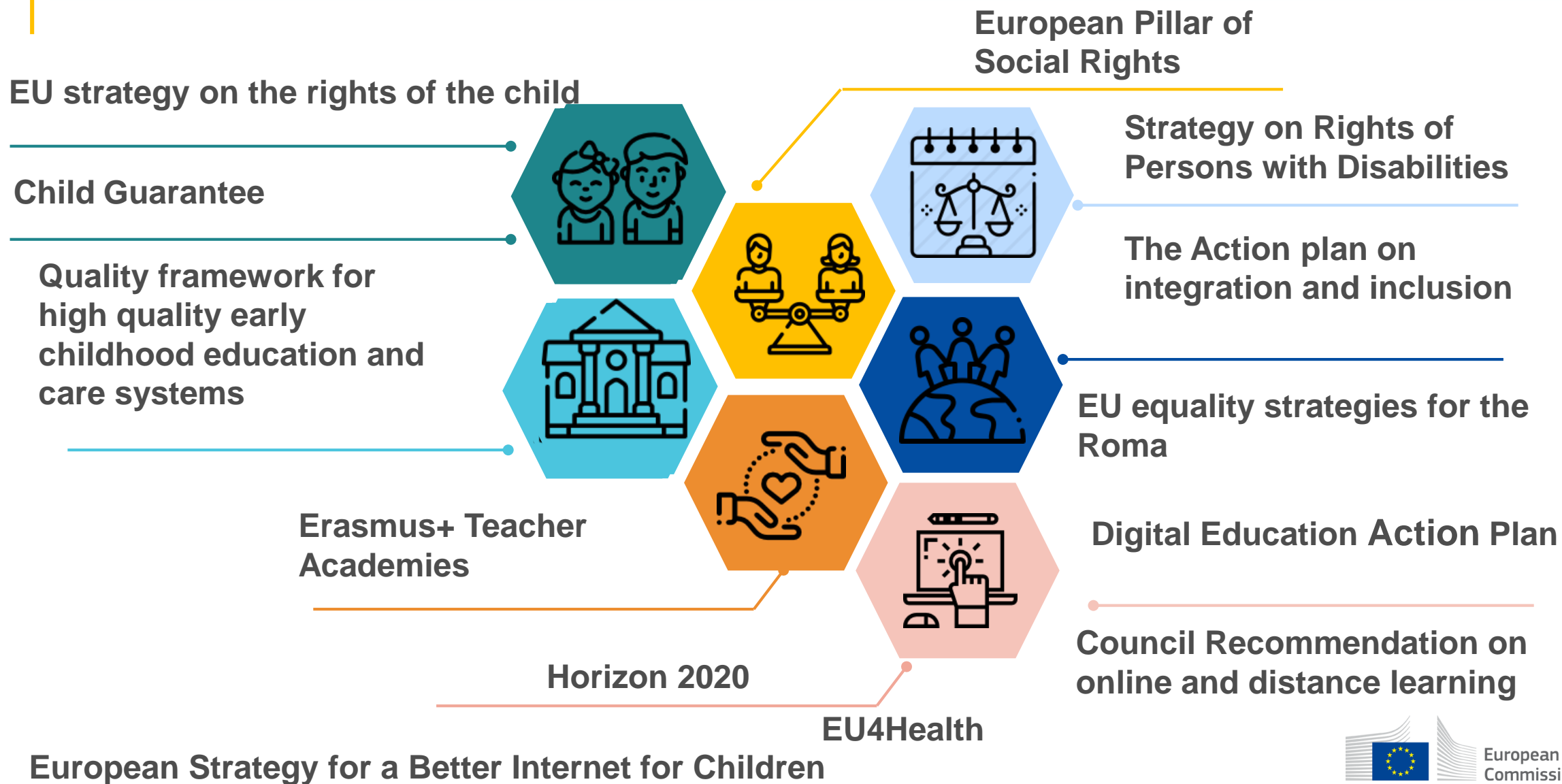
Pathways to school success



Expert Group on wellbeing
and mental health



Synergies with other relevant initiatives

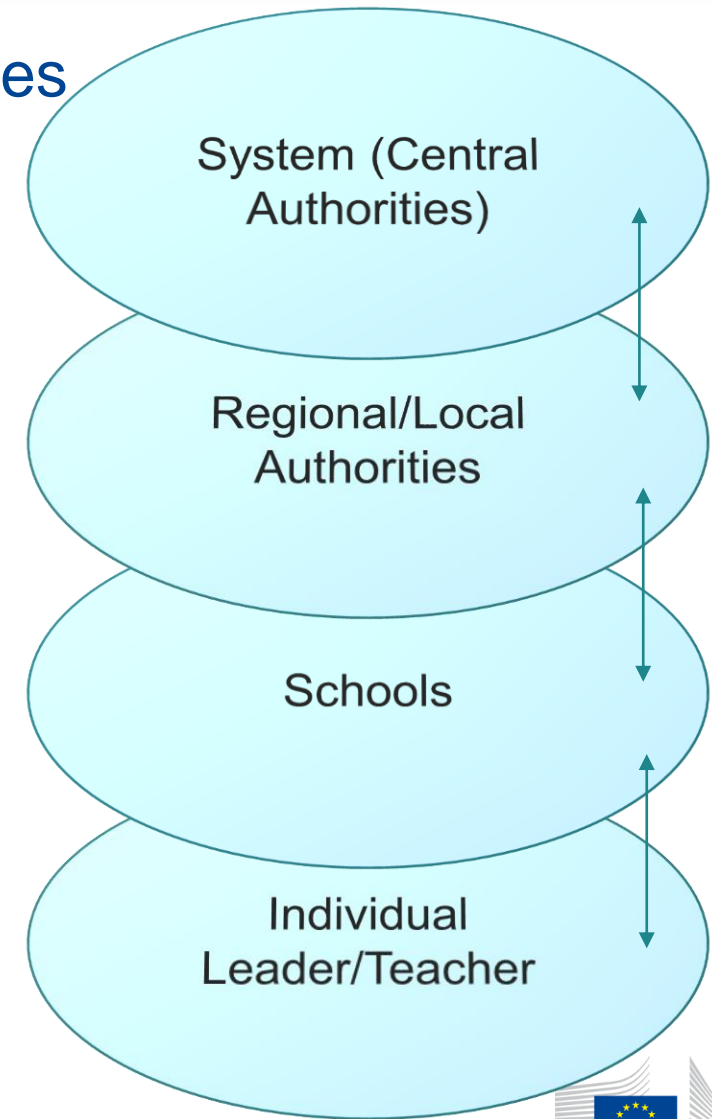
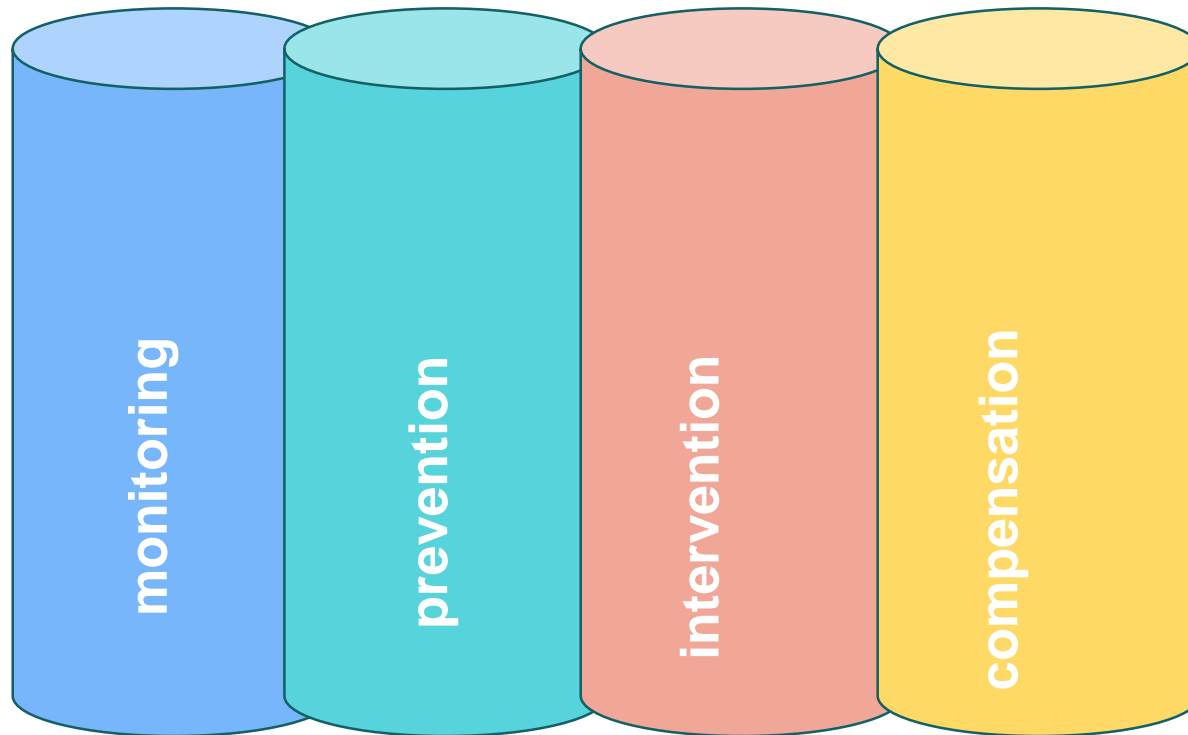


Proposal for a Council Recommendation on Pathways to school success



Pathways to school success: Indicative content

Policy guidance in cooperation with Member States



School governance and leadership



Monitoring

- ✓ National, regional and local data collection systems
- ✓ Early detection and identification of learners at risk
- ✓ Additional support to schools or local environments presenting high levels of educational disadvantage
- ✓ follow-up measures for young people who have left education and training prematurely



Prevention

- ✓ high quality early childhood education and care
- ✓ autonomy accompanied by effective accountability
- ✓ quality assurance mechanisms
- ✓ early screening of language competences, development problems and special education needs
- ✓ positive school climate
- ✓ tackle bullying and violence at school, discrimination, segregation
- ✓ Initial training and continuous professional development of all school staff on educational disadvantage



Intervention

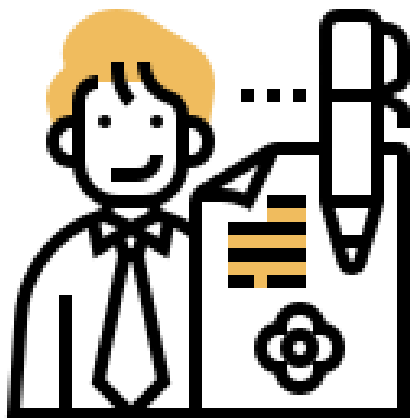
- ✓ support frameworks for pupils at risks
- ✓ support for learners whose native language(s) is/ are not the language(s) of instruction
- ✓ learners' active participation in school life
- ✓ extracurricular and out-of-school activities
- ✓ career education and guidance
- ✓ active involvement of parents and families



Compensation

- ✓ right to individual educational support
- ✓ free second chance programmes

Expert Group on wellbeing and mental health



Policy Recommendations

- ✓ promoting mental health and well-being
- ✓ preventing bullying and violence at school
- ✓ effective up-take of successful practices in schools
- ✓ recommendations for awareness raising activities at EU and national level.



Timeline

**Open Public
Consultation**

**Results of Open
Public
Consultation**

**Targeted
Consultation
Workshops**

**Working
Group
Schools**

**Launch of the
expert group**

**Education
Council -
ADOPTION**

April
2021

May
2021

June
2021

July
2021

August
2021

Sept
2021

Oct
2021

Nov
2021

Dec
2021

January
2022

February
2022

March
2022

April
2022

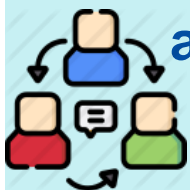
May
2022

Oct
2022

Nov
2022

Tools and ways of work

Exchange of information and experience



- ✓ 12 weeks Open Public Consultation
- ✓ targeted seminars
- ✓ meetings with policy-makers, stakeholders and experts

Evidence



- ✓ Analytical Reports
- ✓ New Studies
- ✓ Good practices from Member States

Financial incentives to stimulate policy reform



- ✓ Erasmus+
- ✓ Recovery and Resilience Facility
- ✓ European Social Fund Plus

Thank you



© European Union 2020

Unless otherwise noted the reuse of this presentation is authorised under the [CC BY 4.0](https://creativecommons.org/licenses/by/4.0/) license. For any use or reproduction of elements that are not owned by the EU, permission may need to be sought directly from the respective right holders.

Slide xx: element concerned, source: e.g. Fotolia.com; Slide xx: element concerned, source: e.g. iStock.com

